



Profile™ Neopor

Siding Insulation



Profile™ Plus siding backer is engineered to meet the needs of every residing project as well as every budget. Manufactured using EPS, Profile offers a stable R-value, dimensional stability, excellent water resistance and compressive strength properties.

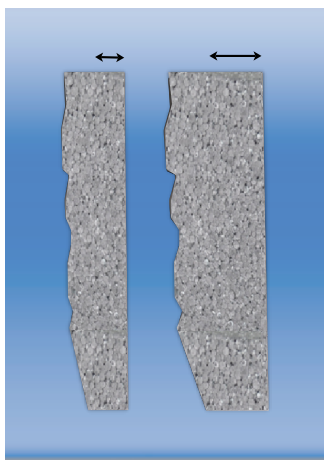
Profile siding backer gives additional strength which makes it less susceptible to impact damage from hail or rocks.

- ***Fits any siding profile (vinyl, fiber cement, wood & steel)***
- ***Fast manufacturing process***
- ***Provides siding a solid feel***
- ***Helps eliminate or reduce "wavy walls"***
- ***Light-weight, high strength***
- ***Allows wall to breath preventing mildew and rot***
- ***Corner posts and starter strips available***

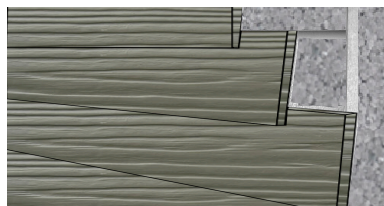
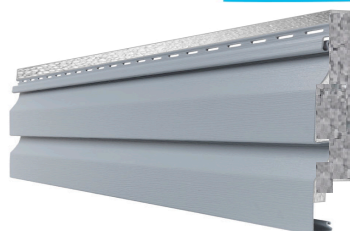
Profile Neopor EPS Properties

Thickness	R-Value @ 23° F	R-Value @ 75° F	PSI CR @ 10%
1"	5.01	4.48	13.0

Any Thickness



Any Profile



Vinyl
Fiber Cement
Wood
Steel
Aluminum
Composite

Plymouth Foam
1800 Sunset Dr.
Plymouth, WI 53073
920-889-0021
800-669-1176

Contact

John Calkins 920-889-0021 jcedisonassc@yahoo.com

This brochure is printed by JC Edison & Associates for promotional use only.
Check Plymouth Foam's website for additional information.