



Gold-Fold ^{HD}

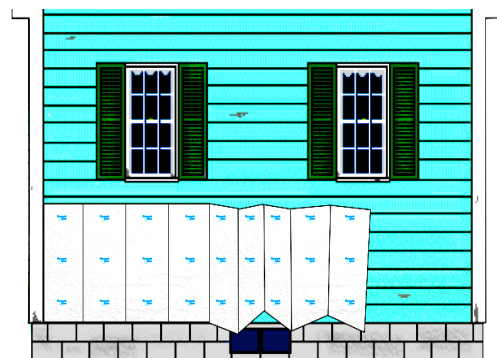
Siding Insulation



Gold-Fold HD is a fan fold siding product for retro-fits or new construction. This fast to install system comes with a 2 sided, high barrier facer that protects against many types of chemicals. Made with moisture-resistant closed-cell EPS (expanded polystyrene), Gold-Fold is a tough product that holds its R-value and is resistant to bacteria, fungus, rot, mold and mildew.

Gold-Fold is fast to install and offers a stable r-value, dimensional stability, excellent water resistance and compressive strength properties. Facers can be clear or reflective.

- **2 Square bundles (1/4", 3/8" and 1/2")**
- **Rapid Installation**
- **Great for retro-fit applications**
- **No off-gassing**
- **Light-weight, high strength**



Gold-Fold HD EPS Properties

Thickness	R-Value @ 40° F	R-Value @ 75° F	PSI CR @ 10%
.75"	3.41	3.13	15.0
.5"	2.28	2.09	15.0
.375"	1.71	1.56	15.0
.25	1.14	1.04	15.0

Availability

- 2' x 50' 2 square bundle
- 2' x 48' nominal 2 square bundle
- * .75" - 1 square bundles only



Plymouth Foam
1800 Sunset Dr.
Plymouth, WI 53073
920-889-0021
800-669-1176

Contact

John Calkins 920-889-0021 jcedisonassc@yahoo.com

This brochure is printed by JC Edison & Associates for promotional use only.
Check Plymouth Foam's website for additional information.