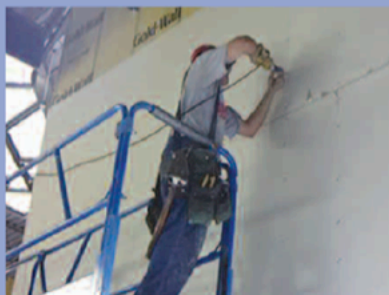




Gold-Wall cuts easily with common tools.



Drywall attaches easily to the embedded galvanized (G-60) furring strips (25ga).



There is no steep learning curve when using Gold-Wall. Voiding out for conduit or cutting out penetrations can be done with a hot knife or common tools.

Standard Product Availability

- Panel sizes of 48" x 96"
- Panel thickness' of 1", 1 1/2", 2" and 2 1/2"
- Furring strips at 16" and 24" on center

Gold-Wall insulating panels are constructed of EPS insulation with embedded galvanized (G-60) steel furring strips (25ga) embedded at 16 or 24 inch centers.

Gold-Wall is available in other thickness' and densities. Please call for quote.

- Does not support mold: Gold-Wall does not support or promote the growth of mold.

Applicable Standards

ASTM C578-01 ASTM C645-00
ASTM C754-00 ASTM A653
Gold-Wall Patent #6,725,616



The Grey Advantage: Integrated within the Neopor cell structure, the graphite reflects radiant heat and significantly improves insulation capacity. This means less material is needed to achieve the same insulating value as traditional EPS.

For more information, please call or visit us at
www.plymouthfoam.com

800-669-1176



Look for these designations on DuraSpec Building Products

© 2006 Plymouth Foam Inc. (8/06)

Gold-Wall®

WALL INSULATION SYSTEM

**A superior
alternative to rigid
board, multi-step
Z-furring systems.**

**Get more done
with greater efficiency
by using a better
insulation system.**



Plymouth
Foam
INCORPORATED
DuraSpec Building Products

Gold-Wall®

**Lower installation costs.
Superior thermal performance.**

Gold-Wall is an innovative way to insulate over concrete block, precast, tilt-up, or poured concrete walls. It has numerous advantages over the conventional Z-furring systems:

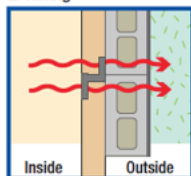
- Significantly faster installations
- Dimensional stability
- Higher R- values

Gold-Wall, made from expanded polystyrene (EPS), is unique because it is factory-made with 25 gauge galvanized (G-60) steel studs embedded directly into the insulation. The EPS board and rigid studs are then laminated on both sides with a durable polymeric facer.

Recently, 88% of polled Architects rated thermal performance as the top factor in specifying wall insulation. Gold-Wall insulates better than conventional Z-furring systems because the embedded steel studs are completely isolated from the exterior wall. In a Z-furring system the steel Z- strip is in direct contact with the exterior wall, transferring the cold through to the interior surfaces, reducing the insulation's R factor by over 42%*. Additionally, Gold-Wall virtually eliminates condensation and related issues such as shadowing. *Construction Technologies laboratories R-Value Comparison, Project #181035.

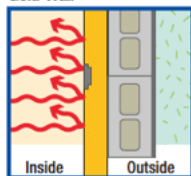
Gold-Wall Eliminates Thermal Bridging

Z-furring



"Thermal Bridging" where metal furring contacts masonry causes 42% energy loss.

Gold-Wall



No "Thermal Bridging". Better energy performance. No condensation issues.



Because Gold-Wall comes in panels with built-in studs, installation is **FAST, EASY and ACCURATE**.



Use a circular saw, utility knife or hot knife to make accurate cuts where you need them.



PROPERTIES	Thermal Resistance @ 40°F @ 75°F		Water Vapor Transmission	Water Absorption	Flame Spread	Smoke Developed
	Unit(s) of Measure:	R-Value	Perms	% by Volume		
	ASTM Test Method:	C 177	E 96	C 272	E 84	E 84
1" Gold-Wall	4.48	4.69	0.07	0.20	15	95-125
1.5" Gold-Wall	6.72	7.04	0.07	0.20	15	95-125
2" Gold-Wall	8.96	18.34	0.07	0.20	15	95-125
2.5" Gold-Wall	11.2	22.93	0.07	0.20	15	95-125



Stud spacing remains accurate, panel to panel, with stud spacing at 16 or 24 inch centers.



Minor in the field trimming offers the ability to easily float inside drywall corners.